



Uploaded to VFC Website

▶▶ **November 2012** ◀◀

This Document has been provided to you courtesy of Veterans-For-Change!

Feel free to pass to any veteran who might be able to use this information!

For thousands more files like this and hundreds of links to useful information, and hundreds of "Frequently Asked Questions, please go to:

[Veterans-For-Change](#)

*Veterans-For-Change is a 501(c)(3) Non-Profit Corporation
Tax ID #27-3820181*

If Veteran's don't help Veteran's, who will?

We appreciate all donations to continue to provide information and services to Veterans and their families.

https://www.paypal.com/cgi-bin/webscr?cmd=_s-xclick&hosted_button_id=WGT2M5UTB9A78

Note:

VFC is not liable for source information in this document, it is merely provided as a courtesy to our members.



Item ID Number 05678

Not Scanned

Author

Corporate Author

Report/Article Title Typescript: Agent Orange Pilot Study, April 21, 1986

Journal/Book Title

Year 0000

Month/Day

Color

Number of Images 0

Description Notes Alvin L. Young filed these documents together with others under the label, "Agent Orange Exposure Project."

HQDA, (DAAG-ESG)
Room 210
1730 K St., N.W.
Washington, D.C. 20006-3868

21 APR 1986

A G E N T O R A N G E P I L O T

S T U D Y

AGENT ORANGE PILOT STUDYEXPOSURES ASSESSMENT TOTALSNUMBER OF PERSONNEL WITH EXPOSURES

<u>BATTALIONS</u>	<u>2 KILOMETERS - 3 DAYS</u>	<u>2 KILOMETERS - 6 DAYS</u>
	<u>PERSONNEL</u>	<u>PERSONNEL</u>
BATTALION #2	301	338
BATTALION #6	150	150
BATTALION #10	65	65
BATTALION #20	0	0
BATTALION #22	106	144
BATTALION #43	7	7
BATTALION #50	20	23
TOTALS	649	727

$\frac{1}{4}$
166

- 120
- Over 16,000 study subjects were qualified for all Battalions in the study to date.
 - Over 5,000 of these qualified study subjects were members of the seven (7) battalions in the Pilot Study.
 - Since study subjects were qualified prior to identifying the spray dates (exposure hit dates) of the units, only 700 plus subjects were provided exposures.
 - This Pilot Study has proven that identifying and qualifying study subjects before we know the spray or exposure hit dates of the units is a waste of time and resources.
 - Now that we know the spray hit dates of the battalions for the Pilot Study we can now review the Company Morning Reports to identify additional personnel who were in the units on those specific spray dates.
 - This procedure should be followed for the remaining battalions in the main Agent Orange Epidemiological Study.

21 APR 1986

AGENT ORANGE PILOT STUDY

UNIT EXPOSURE ASSESSMENT

AGENT ORANGE PILOT STUDY

UNIT EXPOSURE ASSESSMENT

Enter Unit

BATTALION #2

	<u>2 KILOMETERS - 3 DAYS</u>		<u>TOTAL</u>
	<u>RANCH HAND</u>	<u>SERVICES</u>	
A COMPANY	1	0	1
B COMPANY	0	1	1
C COMPANY	3	2	5
D COMPANY	0	0	0
E COMPANY	<u>0</u>	<u>0</u>	<u>0</u>
TOTALS	4	3	7

BATTALION #2

	<u>2 KILOMETERS - 6 DAYS</u>		<u>TOTAL</u>
	<u>RANCH HAND</u>	<u>SERVICES</u>	
A COMPANY	2	0	2
B COMPANY	3	1	4
C COMPANY	3	5	8
D COMPANY	0	0	0
E COMPANY	<u>0</u>	<u>0</u>	<u>0</u>
TOTALS	8	6	14

9/0 DAYS

BATTALION #2

UNKNOWN SPRAYS

	<u>2 KILOMETERS - 3 DAYS</u>	<u>2 KILOMETERS - 6 DAYS</u>
A COMPANY	2	5
B COMPANY	0	1
C COMPANY	3	5
D COMPANY	0	0
E COMPANY	<u>0</u>	<u>0</u>
TOTALS	5	11

21 APR 1986

AGENT ORANGE PILOT STUDY

UNIT EXPOSURE ASSESSMENT

<u>BATTALION #6</u>	<u>2 KILOMETERS - 3 DAYS</u>		<u>TOTAL</u>
	<u>RANCH HAND</u>	<u>SERVICES</u>	
A BATTERY	0	11	11
B BATTERY	0	0	0
C BATTERY	0	1	1
D BATTERY	0	0	0
E BATTERY	<u>0</u>	<u>0</u>	<u>0</u>
TOTALS	0	12	12

<u>BATTALION #6</u>	<u>2 KILOMETERS - 6 DAYS</u>		<u>TOTAL</u>
	<u>RANCH HAND</u>	<u>SERVICES</u>	
A BATTERY	0	19	19
B BATTERY	0	0	0
C BATTERY	0	1	1
D BATTERY	0	0	0
E BATTERY	<u>0</u>	<u>0</u>	<u>0</u>
TOTALS	0	20	20

<u>BATTALION #6</u>	<u>UNKNOWN SPRAYS</u>	
	<u>2 KILOMETERS - 3 DAYS</u>	<u>2 KILOMETERS - 6 DAYS</u>
A BATTERY	13	28
B BATTERY	24	35
C BATTERY	1	1
D BATTERY	7	11
E BATTERY	<u>0</u>	<u>0</u>
TOTALS	45	75

AGENT ORANGE PILOT STUDY

21 APR 1986

UNIT EXPOSURE ASSESSMENT

BATTALION #10

2 KILOMETERS - 3 DAYS

	<u>RANCH HAND</u>	<u>SERVICES</u>	<u>TOTAL</u>
A TROOP	0	0	0
B TROOP	0	0	0
C TROOP	0	0	0
D TROOP	0	2	2
E TROOP	<u>0</u>	<u>0</u>	<u>0</u>
TOTAL	0	2	2

BATTALION #10

2 KILOMETERS - 6 DAYS

	<u>RANCH HAND</u>	<u>SERVICES</u>	<u>TOTAL</u>
A TROOP	0	0	0
B TROOP	0	0	0
C TROOP	0	0	0
D TROOP	0	4	4
E TROOP	<u>0</u>	<u>0</u>	<u>0</u>
TOTAL	0	4	4

BATTALION #10

UNKNOWN SPRAYS

	<u>2 KILOMETERS - 3 DAYS</u>	<u>2 KILOMETERS - 6 DAYS</u>
A TROOP	11	16
B TROOP	19	26
C TROOP	4	9
D TROOP	14	23
E TROOP	<u>0</u>	<u>0</u>
TOTAL	48	74

AGENT ORANGE PILOT STUDY

21 APR 1986

UNIT EXPOSURE ASSESSMENT

BATTALION #20

	<u>2 KILOMETERS - 3 DAYS</u>		<u>TOTAL</u>
	<u>RANCH HAND</u>	<u>SERVICES</u>	
A TROOP	2	2	4
B TROOP	0	0	0
C TROOP	0	5	5
D TROOP	0	3	3
E TROOP	<u>0</u>	<u>0</u>	<u>0</u>
TOTALS	2	10	12

BATTALION #20

	<u>2 KILOMETERS - 6 DAYS</u>		<u>TOTAL</u>
	<u>RANCH HAND</u>	<u>SERVICES</u>	
A TROOP	3	4	7
B TROOP	0	0	0
C TROOP	3	10	13
D TROOP	1	5	6
E TROOP	<u>0</u>	<u>0</u>	<u>0</u>
TOTALS	7	19	26

BATTALION #20

UNKNOWN SPRAY

	<u>2 KILOMETERS - 3 DAYS</u>	<u>2 KILOMETERS - 6 DAYS</u>
A TROOP	21	32
B TROOP	22	28
C TROOP	25	36
D TROOP	8	11
E TROOP	<u>0</u>	<u>0</u>
TOTALS	76	107

AGENT ORANGE PILOT STUDYUNIT EXPOSURE ASSESSMENTBATTALION #222 KILOMETERS - 3 DAYS

	<u>RANCH HAND</u>	<u>SERVICES</u>	<u>TOTAL</u>
A COMPANY	1	3	4
B COMPANY	1	0	1
C COMPANY	1	2	3
D COMPANY	0	3	3
E COMPANY	<u>0</u>	<u>0</u>	<u>0</u>
TOTALS	3	8	11

BATTALION #222 KILOMETERS - 6 DAYS

	<u>RANCH HAND</u>	<u>SERVICES</u>	<u>TOTAL</u>
A COMPANY	1	7	8
B COMPANY	1	0	1
C COMPANY	1	3	4
D COMPANY	0	4	4
E COMPANY	<u>0</u>	<u>0</u>	<u>0</u>
TOTALS	3	14	17

BATTALION #22UNKNOWN SPRAYS

	<u>2 KILOMETERS - 3 DAYS</u>	<u>2 KILOMETERS - 6 DAY</u>
A COMPANY	3	10
B COMPANY	9	15
C COMPANY	7	13
D COMPANY	5	13
E COMPANY	<u>0</u>	<u>0</u>
TOTALS	24	51

21 APR 1986

AGENT ORANGE PILOT STUDY

UNIT EXPOSURE ASSESSMENT

BATTALION #43

2 KILOMETERS - 3 DAYS

	<u>RANCH HAND</u>	<u>SERVICES</u>	<u>TOTAL</u>
A COMPANY	0	2	2
B COMPANY	0	2	2
C COMPANY	1	0	1
D COMPANY	0	2	2
E COMPANY	<u>0</u>	<u>0</u>	<u>0</u>
TOTALS	1	6	7

BATTALION #43

2 KILOMETERS - 6 DAYS

	<u>RANCH HAND</u>	<u>SERVICES</u>	<u>TOTAL</u>
A COMPANY	0	2	2
B COMPANY	0	2	2
C COMPANY	1	0	1
D COMPANY	0	3	3
E COMPANY	<u>0</u>	<u>0</u>	<u>0</u>
TOTALS	1	7	8

BATTALION #43

UNKNOWN SPRAYS

	<u>2 KILOMETERS - 3 DAYS</u>	<u>2 KILOMETERS - 6 DAYS</u>
A COMPANY	2	4
B COMPANY	0	0
C COMPANY	4	8
D COMPANY	3	4
E COMPANY	<u>0</u>	<u>0</u>
TOTALS	9	16

AGENT ORANGE PILOT STUDY
UNIT EXPOSURE ASSESSMENT

<u>BATTALION #50</u>	<u>2 KILOMETERS - 3 DAYS</u>		<u>TOTALS</u>
	<u>RANCH HAND</u>	<u>SERVICES</u>	
A COMPANY	2	3	5
B COMPANY	1	3	4
C COMPANY	5	3	8
D COMPANY	0	0	0
E COMPANY	<u>2</u>	<u>3</u>	<u>5</u>
TOTALS	10	12	22

<u>BATTALION #50</u>	<u>2 KILOMETERS - 6 DAYS</u>		<u>TOTALS</u>
	<u>RANCH HAND</u>	<u>SERVICES</u>	
A COMPANY	13	6	19
B COMPANY	9	6	15
C COMPANY	13	4	17
D COMPANY	0	0	0
E COMPANY	<u>8</u>	<u>6</u>	<u>14</u>
TOTAL	43	22	65

<u>BATTALION #50</u>	<u>UNKNOWN SPRAYS</u>	
	<u>2 KILOMETERS - 3 DAYS</u>	<u>2 KILOMETERS - 6 DAYS</u>
A COMPANY	0	0
B COMPANY	0	0
C COMPANY	0	<u>0</u>
D COMPANY	0	0
E COMPANY	<u>0</u>	<u>0</u>
TOTALS	0	0

21 APR 1986

AGENT ORANGE PILOT STUDY
INDIVIDUAL EXPOSURE ASSESSMENT
SCORES

AGENT ORANGE PILOT STUDY

21 APR 1986

INDIVIDUAL AGENT ORANGE

EXPOSURE ASSESSMENT SCORES

<u>BATTALION #2</u>	<u>2 KILOMETERS - 3 DAYS</u>	
<u>A COMPANY</u>	<u>EXPOSURES</u>	<u>PERSONNEL</u>
	1	75

<u>BATTALION #2</u>	<u>2 KILOMETERS - 6 DAYS</u>	
<u>A COMPANY</u>	<u>EXPOSURES</u>	<u>PERSONNEL</u>
	1	82
	2	24
TOTAL		106

<u>BATTALION #2</u>	<u>2 KILOMETERS - 3 DAYS</u>	
<u>B COMPANY</u>	<u>EXPOSURES</u>	<u>PERSONNEL</u>
	1	102

<u>BATTALION #2</u>	<u>2 KILOMETERS - 6 DAYS</u>	
<u>B COMPANY</u>	<u>EXPOSURES</u>	<u>PERSONNEL</u>
	1	46
	2	1
	3	5
	4	56
TOTAL		108

<u>BATTALION #2</u>	<u>2 KILOMETERS - 3 DAYS</u>	
<u>C COMPANY</u>	<u>EXPOSURES</u>	<u>PERSONNEL</u>
	1	4
	2	57
	4	39
	5	24
TOTAL		124

<u>BATTALION #2</u>	<u>2 KILOMETERS - 6 DAYS</u>	
<u>C COMPANY</u>	<u>EXPOSURES</u>	<u>PERSONNEL</u>
	1	4
	2	4
	5	53
	7	39
	8	24
TOTAL		124

AGENT ORANGE PILOT STUDY

21 APR 1986

INDIVIDUAL AGENT ORANGE

EXPOSURE ASSESSMENT SCORES

BATTALION #6

2 KILOMETERS - 3 DAYS

A COMPANY

EXPOSURES

PERSONNEL

1	4
2	1
4	3
5	6
6	27
7	1
8	3
10	35
11	2

TOTAL

86

BATTALION #6

2 KILOMETERS - 6 DAYS

A COMPANY

EXPOSURES

PERSONNEL

1	4
5	1
6	2
7	2
8	5
11	27
12	1
13	3
18	35
19	2

TOTAL

86

BATTALION #6

2 KILOMETERS - 3 DAYS

C COMPANY

EXPOSURES

PERSONNEL

1	<u>TOTAL</u> 64
---	-----------------

BATTALION #6

2 KILOMETERS - 6 DAYS

C COMPANY

EXPOSURES

PERSONNEL

1	<u>TOTAL</u> 64
---	-----------------

21 APR 1986

AGENT ORANGE PILOT STUDY

INDIVIDUAL AGENT ORANGE

EXPOSURE ASSESSMENT SCORES

<u>BATTALION #10</u>	<u>2 KILOMETERS - 3 DAYS</u>	
	<u>EXPOSURES</u>	<u>PERSONNEL</u>
D TROOP	2	65

<u>BATTALION #10</u>	<u>2 KILOMETERS - 6 DAYS</u>	
	<u>EXPOSURES</u>	<u>PERSONNEL</u>
D TROOP	4	65

21 APR 1986

AGENT ORANGE PILOT STUDY
INDIVIDUAL AGENT ORANGE
EXPOSURE ASSESSMENT SCORES

<u>BATTALION #22</u>	<u>2 KILOMETERS - 3 DAYS</u>	
<u>A COMPANY</u>	<u>EXPOSURES</u>	<u>PERSONNEL</u>
	1	2
	3	<u>36</u>
TOTAL		38

<u>BATTALION #22</u>	<u>2 KILOMETERS - 6 DAYS</u>	
<u>A COMPANY</u>	<u>EXPOSURES</u>	<u>PERSONNEL</u>
	1	40
	6	5
	7	<u>31</u>
TOTAL		76

<u>BATTALION #22</u>	<u>2 KILOMETERS - 3 DAYS</u>	
<u>B COMPANY</u>	<u>EXPOSURES</u>	<u>PERSONNEL</u>
	1	1

<u>BATTALION #22</u>	<u>2 KILOMETERS - 6 DAYS</u>	
<u>B COMPANY</u>	<u>EXPOSURES</u>	<u>PERSONNEL</u>
	1	1

CONTINUED ON NEXT PAGE.

21 APR 1986

BATTALION #22

2 KILOMETERS - 3 DAYS

<u>C COMPANY</u>	<u>EXPOSURES</u>	<u>PERSONNEL</u>
	1	1
	2	32
	3	<u>4</u>
TOTAL		37

BATTALION #22

2 KILOMETERS - 6 DAYS

<u>C COMPANY</u>	<u>EXPOSURES</u>	<u>PERSONNEL</u>
	1	1
	3	32
	4	<u>4</u>
TOTAL		37

BATTALION #22

2 KILOMETERS - 3 DAYS

<u>D COMPANY</u>	<u>EXPOSURES</u>	<u>PERSONNEL</u>
	2	1
	3	<u>29</u>
TOTAL		30

BATTALION #22

2 KILOMETERS - 6 DAYS

<u>D COMPANY</u>	<u>EXPOSURES</u>	<u>PERSONNEL</u>
	2	1
	4	<u>29</u>
TOTAL		30

AGENT ORANGE PILOT STUDYINDIVIDUAL AGENT ORANGEEXPOSURE ASSESSMENT SCORES

<u>BATTALION #43</u>	<u>2 KILOMETERS - 3 DAYS</u>	
	<u>EXPOSURES</u>	<u>PERSONNEL</u>
B TROOP	1	2

<u>BATTALION #43</u>	<u>2 KILOMETERS - 6 DAYS</u>	
	<u>EXPOSURES</u>	<u>PERSONNEL</u>
B TROOP	1	2

<u>BATTALION #43</u>	<u>2 KILOMETERS - 3 DAYS</u>	
	<u>EXPOSURES</u>	<u>PERSONNEL</u>
C TROOP	1	3

<u>BATTALION #43</u>	<u>2 KILOMETERS - 6 DAYS</u>	
	<u>EXPOSURES</u>	<u>PERSONNEL</u>
C TROOP	1	3

<u>BATTALION #43</u>	<u>2 KILOMETERS - 3 DAYS</u>	
	<u>EXPOSURES</u>	<u>PERSONNEL</u>
D TROOP	1	1
	2	<u>1</u>
TOTAL		2

<u>BATTALION #43</u>	<u>2 KILOMETERS - 6 DAYS</u>	
	<u>EXPOSURES</u>	<u>PERSONNEL</u>
D TROOP	1	1
	3	<u>1</u>
TOTAL		2

21 APR 1986

AGENT ORANGE PILOT STUDY
INDIVIDUAL AGENT ORANGE
EXPOSURE ASSESSMENT SCORES

<u>BATTALION #50</u>	<u>2 KILOMETERS - 3 DAYS</u>	
	<u>EXPOSURES</u>	<u>PERSONNEL</u>
A COMPANY	1	4
	4	<u>3</u>
TOTAL		7

<u>BATTALION #50</u>	<u>2 KILOMETERS - 6 DAYS</u>	
	<u>EXPOSURES</u>	<u>PERSONNEL</u>
A COMPANY	2	1
	6	1
	8	1
	9	4
	13	<u>1</u>
TOTAL		8

<u>BATTALION #50</u>	<u>2 KILOMETERS - 3 DAYS</u>	
	<u>EXPOSURES</u>	<u>PERSONNEL</u>
B COMPANY	4	2

<u>BATTALION #50</u>	<u>2 KILOMETERS - 6 DAYS</u>	
	<u>EXPOSURES</u>	<u>PERSONNEL</u>
B COMPANY	1	2
	6	1
	9	<u>2</u>
TOTAL		5

CHART CONTINUED ON NEXT PAGE.

BATTALION #502 KILOMETERS - 3 DAYS

	<u>EXPOSURES</u>	<u>PERSONNEL</u>
C COMPANY	1	5

BATTALION #502 KILOMETERS - 6 DAYS

	<u>EXPOSURES</u>	<u>PERSONNEL</u>
C COMPANY	1	2
	5	3
	6	<u>2</u>
TOTAL		7

BATTALION #502 KILOMETERS - 3 DAYS

	<u>EXPOSURES</u>	<u>PERSONNEL</u>
E COMPANY	5	1

BATTALION #502 KILOMETERS - 6 DAYS

	<u>EXPOSURES</u>	<u>PERSONNEL</u>
E COMPANY	2	2
	11	<u>1</u>
TOTAL		3

AGENT ORANGE PILOT STUDY
INDIVIDUAL AGENT ORANGE
EXPOSURE ASSESSMENT SCORES

<u>BATTALION #2</u>	<u>0.5 KILOMETER - 1 DAY</u>	
	<u>EXPOSURES</u>	<u>PERSONNEL</u>
B COMPANY	1	102

<u>BATTALION #6</u>	<u>0.5 KILOMETERS - 1 DAY</u>	
	<u>EXPOSURES</u>	<u>PERSONNEL</u>
A COMPANY	1	2
	2	<u>62</u>
		64

NUMBER OF PERSONNEL WITH EXPOSURES

0.5 KILOMETERS - 1 DAY

<u>BATTALIONS</u>	<u>0.5 KILOMETERS - 1 DAY</u>
BATTALION #2	102
BATTALION #6	<u>64</u>
	166

THERE ARE NOT ENOUGH PREVIOUSLY QUALIFIED PERSONNEL TO PROVIDE EXPOSURE OPPORTUNITY SCORES FOR BATTALION #50.

AGENT ORANGE PILOT STUDY

UNIT EXPOSURE ASSESSMENT

BATTALION #2

	<u>0.5 KILOMETER - 1 DAY</u>		
	<u>RANCH HAND</u>	<u>SERVICES</u>	<u>TOTAL</u>
A COMPANY	0	0	0
B COMPANY	0	1	1
C COMPANY	0	0	0
D COMPANY	0	0	0
E COMPANY	0	0	0

BATTALION #6

A BATTERY	0	2	2
B BATTERY	0	0	0
C BATTERY	0	0	0
D BATTERY	0	0	0
E BATTERY	0	0	0

BATTALION #10

A TROOP	0	0	0
B TROOP	0	0	0
C TROOP	0	0	0
D TROOP	0	0	0
E TROOP	0	0	0

BATTALION #20

A TROOP	0	0	0
B TROOP	0	0	0
C TROOP	0	0	0
D TROOP	0	0	0
E TROOP	0	0	0

BATTALION #22

A COMPANY	0	0	0
B COMPANY	0	0	0
C COMPANY	0	0	0
D COMPANY	0	0	0
E COMPANY	0	0	0

BATTALION #43

0.5 KILOMETER - 1 DAY

	<u>RANCH HAND</u>	<u>SERVICES</u>	<u>TOTAL</u>
A COMPANY	0	0	0
B COMPANY	0	0	0
C COMPANY	0	0	0
D COMPANY	0	0	0
E COMPANY	0	0	0

BATTALION #50

A COMPANY	1	0	1
B COMPANY	1	0	1
C COMPANY	0	0	0
D COMPANY	0	0	0
E COMPANY	0	0	0

	1	2	3	4	5	6	7	8	9	10	11	1	2	3	4	5	6	7	8	9	10	11	12	13	-	18	19								
² A	75											82	24																						
B	102											46	1	5	56																				
C	4	57		39	24							4	4			53			39	24															
⁶ A	4	1		3	6	27	1	3			35	2	4			1	2	2	5			27	1	3		35	2								
C	64												64																						
⁷ D		65													65																				
² A	2		36										40						5	31															
B	1												1																						
C	1	32	4										1		32	4																			
D		1	29											1		29																			
⁴³ B	2												2																						
C	3												3																						
D	1	1											1		1																				
⁵⁰ A	4			3										1					1	4						1									
B				2									2						1		2														
C	5												2			3	2																		
E						1								2																					
268 157 69												47	31	27	1	3	-	35	2	252	33	38	154	57	11	72	30	6	-	28	1	4	-	35	2
690 372 215												146	99	68	41	40	37	37	2	723	471	438	400	246	189	178	106	76	70	70	42	41	31	37	2

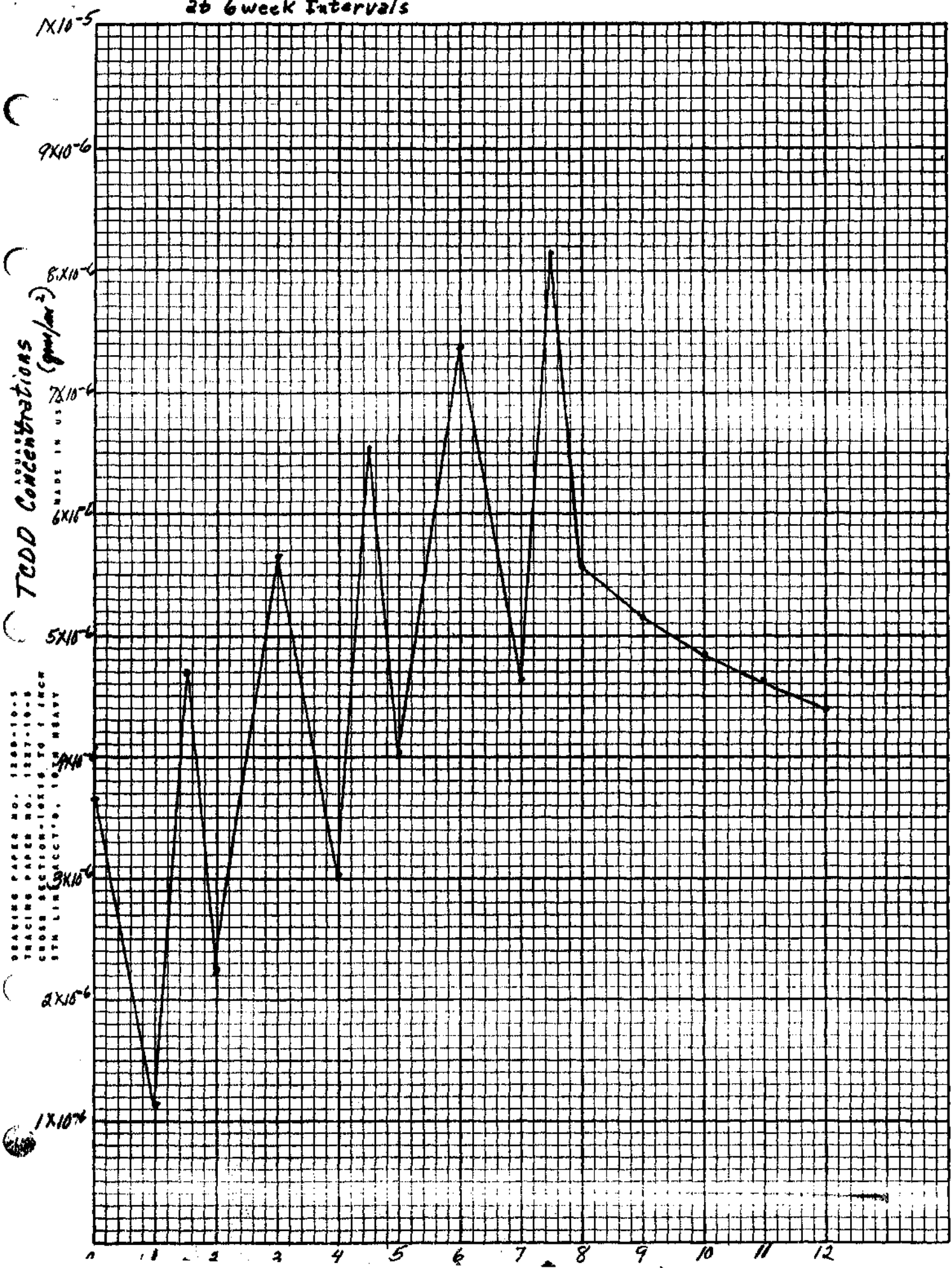
Completed

21 APR 1986

Exposure Comparison
by JG Bricker

	<u>Value</u>
TCDD(Orange)(ppm)	2.0
Jungle Canopy	No
Protective Clothing	No
Dermal Absorption	3%
Vapor Inhalation	2%
Gastro-Intestinal Absorption	1%
$\mu\text{g TCDD}/\text{m}^2$ (ground spray, 460m) = 9.594	
$\mu\text{g TCDD}/\text{serviceman}$ ($1.85\text{m}^2/\text{man}$) = 17.75	
$\mu\text{g TCDD}$ skin absorbed/serviceman = .532	} day of ground spray, 460m.
$\mu\text{g TCDD}$ inhaled/serviceman = .192	
$\mu\text{g TCDD}$ absorbed GI tract = .010	
$\mu\text{g Total TCDD}$ absorbed/exposure = .82	
14 days x .542 = 7.59 } Residual absorption for 2 weeks	
$\mu\text{g Total absorbed in 2 wks}$ 8.41	
$\mu\text{g TCDD absorbed / kg BW}$ = .12	
Fraction of FDA's = 25.48	
VSD of 13×10^{-6} ug	
(3.3×10^{-1} for 70 yrs)	
Fraction of MTD	
of 1×10^{-1} $\mu\text{g}/\text{kg}$ = 1.2	

TCDD Concentrations (GM/m^2) on Ground after 6 Ground sprayings
at 6 week Intervals



Sequences of Pesticide Spraying

at 6 week intervals 70% grasses 30% soil

		T.CDD Totals from All spray	T.CDD Spray #1	T.CDD Spray #2	T.CDD Spray #3	T.CDD Spray #4	T.CDD Spray #5	T.CDD Spray #6
20m - 46m 626 - 15011	Spray ¹ Day 1	3.65×10^{-6}	3.65×10^{-6}					
	1 month	1.13×10^{-6}	1.13×10^{-6}					
	Spray ² 6wks (17)	4.70×10^{-6}	1.05×10^{-6}	3.65×10^{-6}				
	2 months	2.24×10^{-6}	1.01×10^{-6}	1.23×10^{-6}				
	Spray ³ 12wks (3)	5.66×10^{-6}	7.63×10^{-7}	1.05×10^{-6}	3.65×10^{-6}			
	4 months	3.02×10^{-6}	9.08×10^{-7}	9.85×10^{-7}	1.13×10^{-6}			
	Spray ⁴ 18wks (11)	6.55×10^{-6}	8.81×10^{-7}	9.63×10^{-7}	1.05×10^{-6}	3.65×10^{-6}		
	5 months	4.03×10^{-6}	8.69×10^{-7}	9.30×10^{-7}	1.01×10^{-6}	1.23×10^{-6}		
	Spray ⁵ 24wks (6)	7.37×10^{-6}	8.20×10^{-7}	8.86×10^{-7}	9.63×10^{-7}	1.05×10^{-6}	3.65×10^{-6}	
	7th month	4.63×10^{-6}	7.66×10^{-7}	8.42×10^{-7}	9.08×10^{-7}	9.85×10^{-7}	1.13×10^{-6}	
	Spray ⁶ 30wks (7.5)	8.12×10^{-6}	7.55×10^{-7}	8.20×10^{-7}	8.86×10^{-7}	9.63×10^{-7}	1.05×10^{-6}	3.65×10^{-6}
	8th m	5.56×10^{-6}	7.27×10^{-7}	7.98×10^{-7}	8.74×10^{-7}	9.30×10^{-7}	1.01×10^{-6}	1.23×10^{-6}
	9th m	5.15×10^{-6}	6.78×10^{-7}	7.55×10^{-7}	8.20×10^{-7}	8.86×10^{-7}	9.63×10^{-7}	1.05×10^{-6}
	10 m	4.84×10^{-6}	6.34×10^{-7}	7.06×10^{-7}	7.66×10^{-7}	8.42×10^{-7}	9.08×10^{-7}	9.85×10^{-7}
	11 m	4.61×10^{-6}	5.85×10^{-7}	6.56×10^{-7}	7.25×10^{-7}	8.20×10^{-7}	8.69×10^{-7}	9.63×10^{-7}
	1 yr.	4.39×10^{-6}	5.47×10^{-7}	6.13×10^{-7}	6.78×10^{-7}	7.98×10^{-7}	8.20×10^{-7}	9.30×10^{-7}

Concentration of TCDD distributed per square meter of soil to a depth of 1 cm, after a series of Perimeter Spraying at 6 week intervals by ground units zone of spray is 65.6 ft to 150 ft from spraying vehicle *

<u>Time</u>	<u>Spray Operations</u>	<u>Total TCDD Concentration Laid Down (gms/m²)</u>	<u>TCDD Concentration in soil (1cm x m²) (gms/m²-1cm deep)</u>
Day 1	Spray 1. (4 gal/acre)	3.65×10^{-6}	$.26 \times 10^{-9}$
1 month		1.13×10^{-6}	$.08 \times 10^{-9}$
6 weeks	Spray 2. (4 gal/acre)	4.70×10^{-6}	$.33 \times 10^{-9}$
2 months		2.24×10^{-6}	$.16 \times 10^{-9}$
12 weeks	Spray 3. (4 gal/acre)	5.66×10^{-6}	$.40 \times 10^{-9}$
4 months		3.02×10^{-6}	$.21 \times 10^{-9}$
18 weeks	Spray 4. (4 gal/acre)	6.55×10^{-6}	$.46 \times 10^{-9}$
5 months		4.03×10^{-6}	$.28 \times 10^{-9}$
24 weeks	Spray 5. (4 gal/acre)	7.37×10^{-6}	$.52 \times 10^{-9}$
7th month		4.63×10^{-6}	$.32 \times 10^{-9}$
30 weeks	Spray 6. (4 gal/acre)	8.12×10^{-6}	$.57 \times 10^{-9}$
8th month		5.56×10^{-6}	$.39 \times 10^{-9}$
9th month		5.15×10^{-6}	$.36 \times 10^{-9}$
10th month		4.84×10^{-6}	$.34 \times 10^{-9}$
11th month		4.61×10^{-6}	$.32 \times 10^{-9}$
1 year		4.39×10^{-6}	$.31 \times 10^{-9}$

* Half life decay figured on 70% impact on grasses with a 6 day half-life and 30% impact on soil with a one year half-life. Soil based on $1.43 \text{ gms/cc}^3 \times 10,000 \text{ cm}^3/\text{m}^2 = 14,300 \text{ gms/m}^2$ to a depth of 1 cm.