



Uploaded to the VFC Website

▶▶▶ 2015 ◀◀◀

This Document has been provided to you courtesy of Veterans-For-Change!

Feel free to pass to any veteran who might be able to use this information!

For thousands more files like this and hundreds of links to useful information, and hundreds of "Frequently Asked Questions, please go to:

[Veterans-For-Change](#)

If Veterans don't help Veterans, who will?

Note:

VFC is not liable for source information in this document, it is merely provided as a courtesy to our members & subscribers.





Figure A-0-3. View of Former Missile Alert Facility A-0, Looking East



Figure A-0-4. View of Graded Sewage Lagoon at Former Missile Alert Facility A-0, Looking South

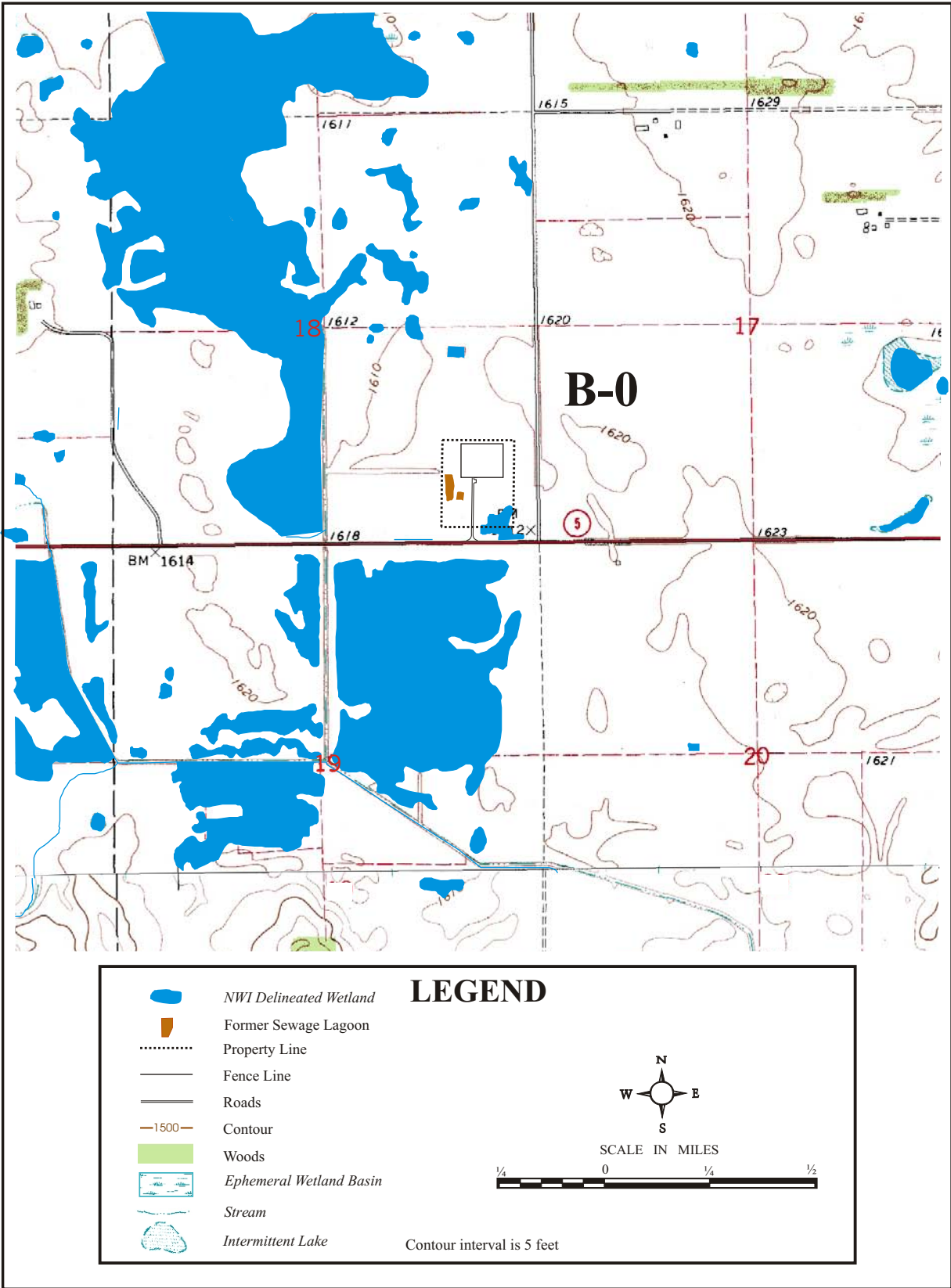


Figure B-0-1. Features Surrounding Former Missile Alert Facility B-0

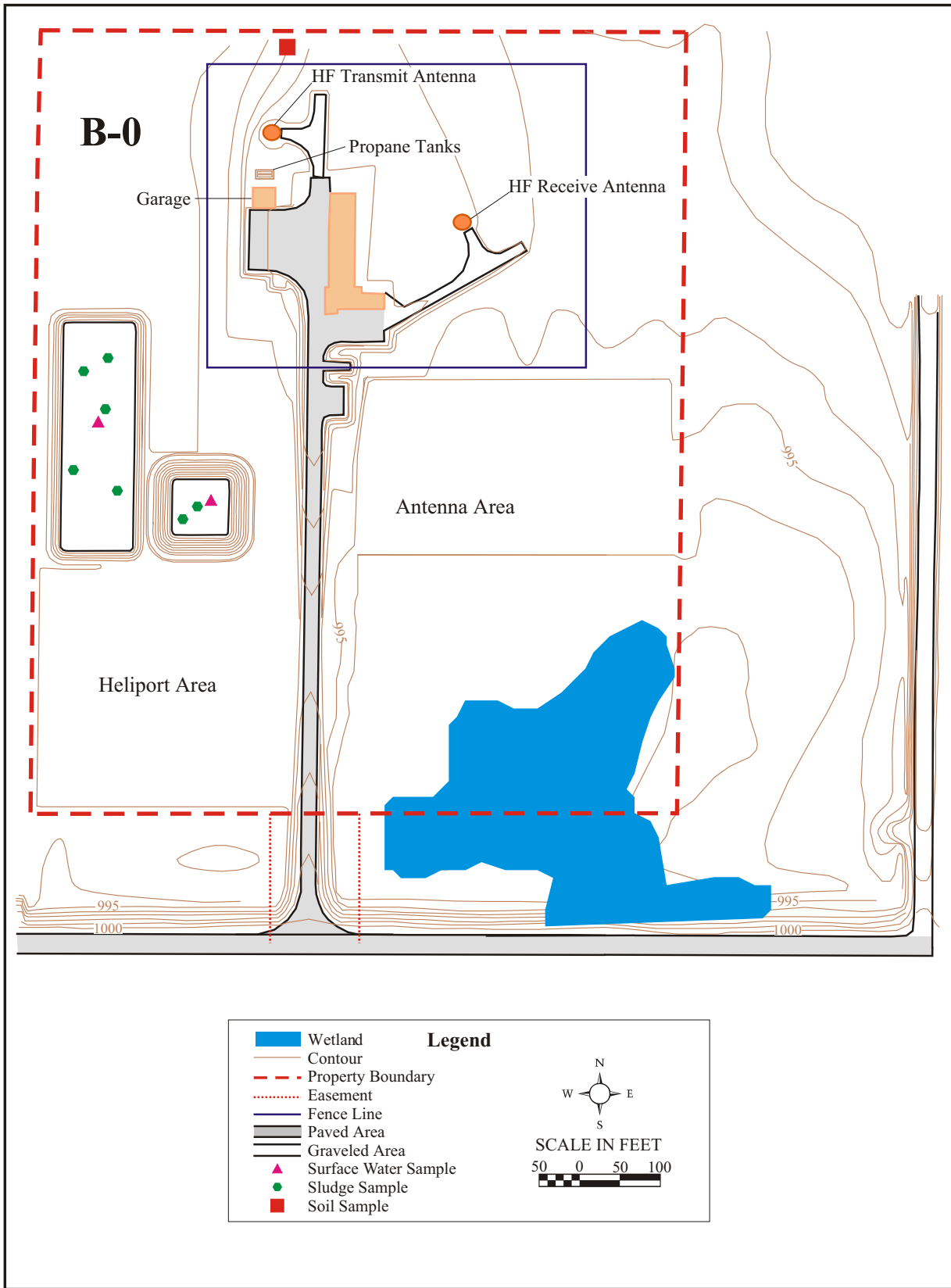


Figure B-0-2. Site Map of Former Missile Alert Facility B-0



Figure B-0-3. View of Access Road of Former Missile Alert Facility B-0 Facing North

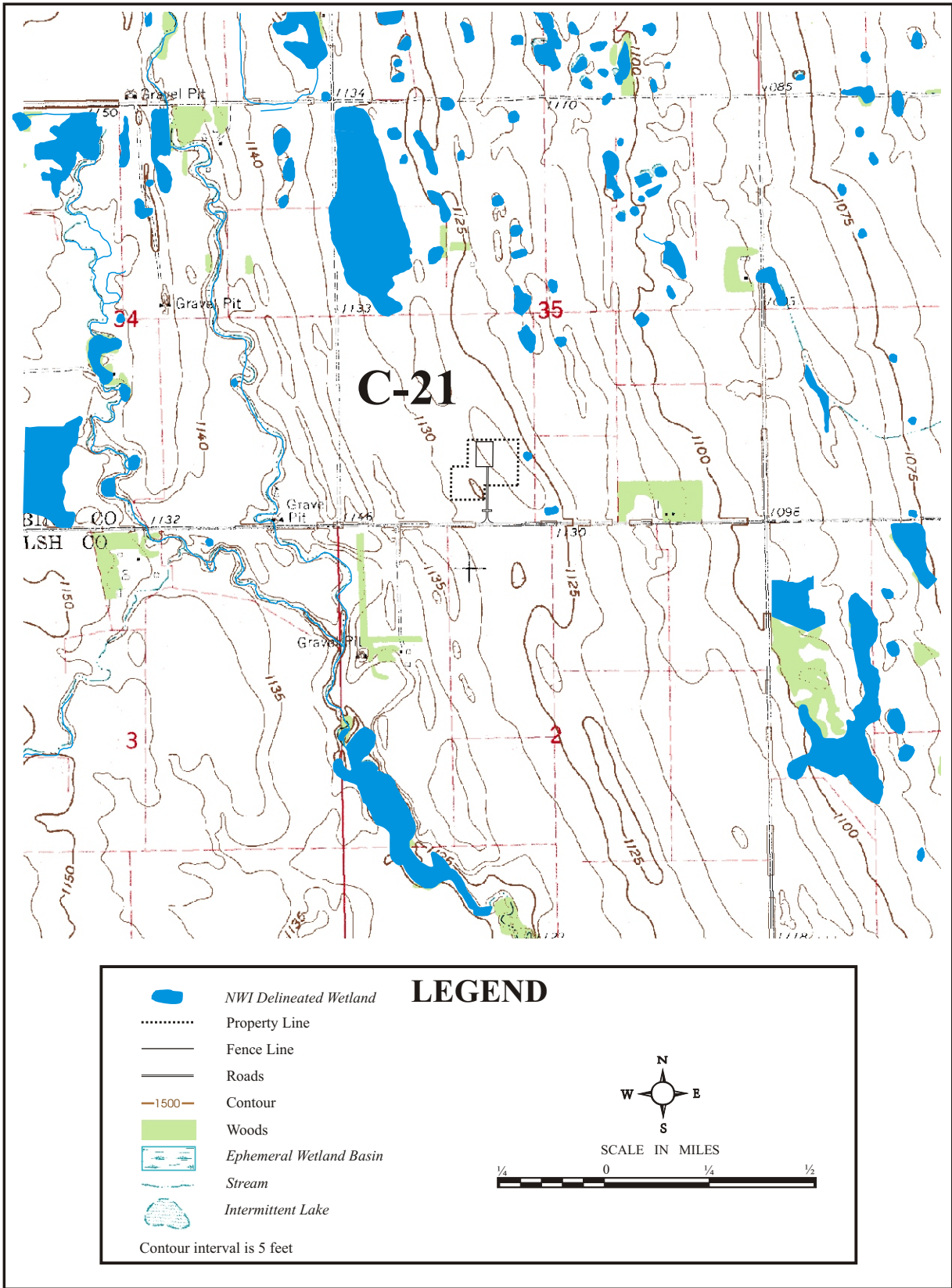


Figure C-21-1. Features Surrounding Former Launch Facility C-21

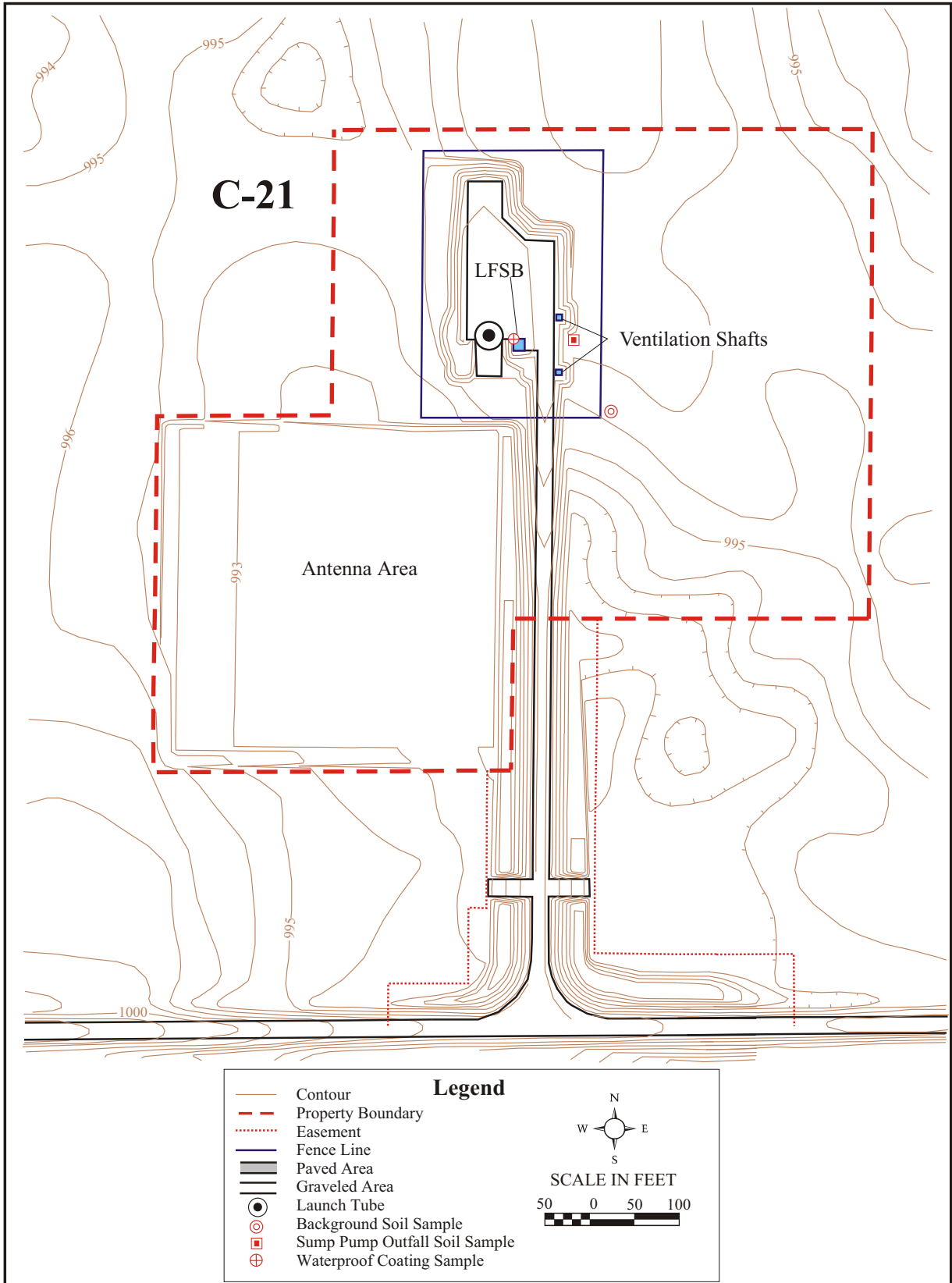


Figure C-21-2. Site Map of Former Launch Facility C-21



Figure C-21-3. View of Former Launch Facility C-21 Facing North

This page intentionally left blank.

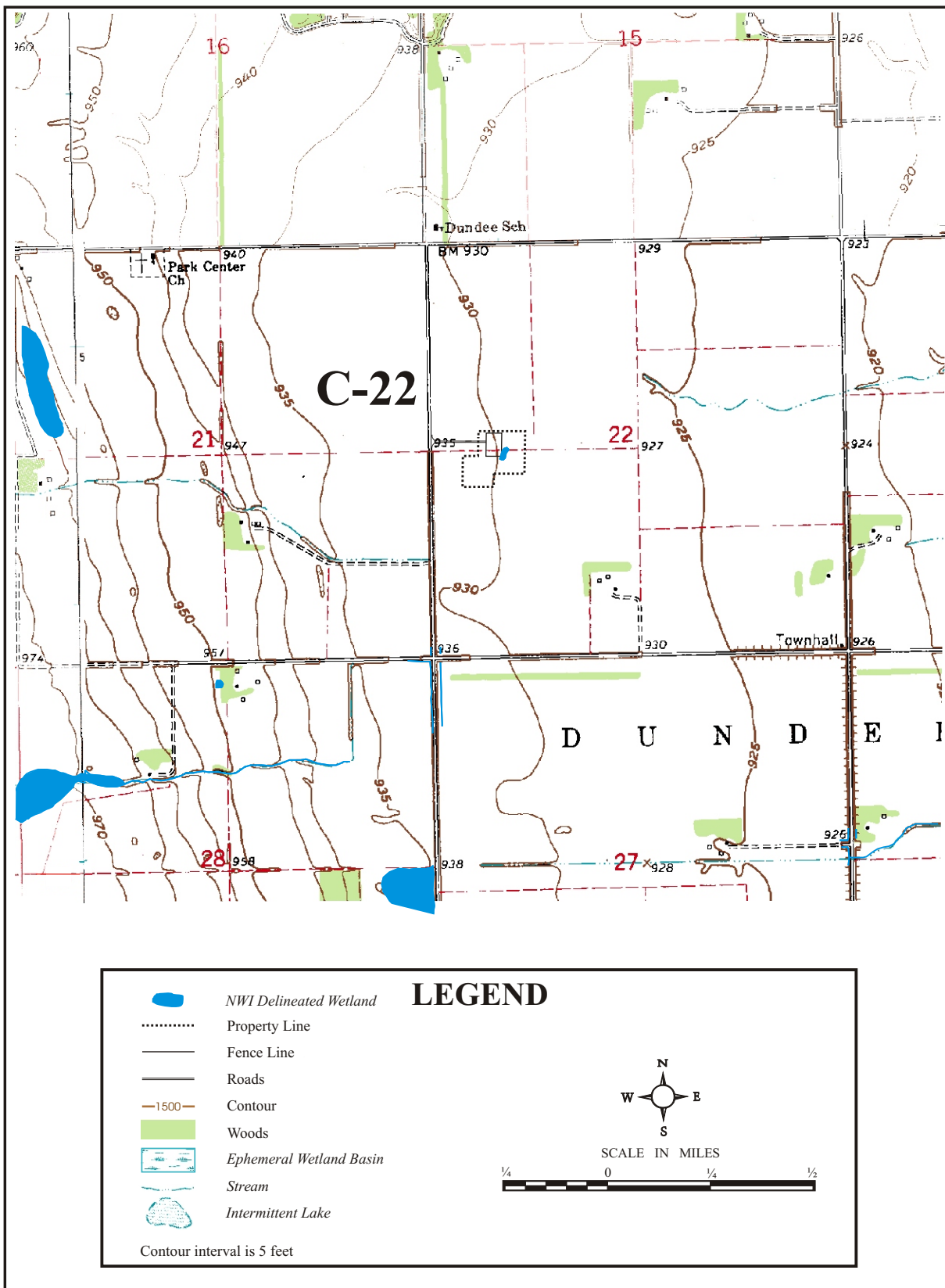


Figure C-22-1. Features Surrounding Former Launch Facility C-22

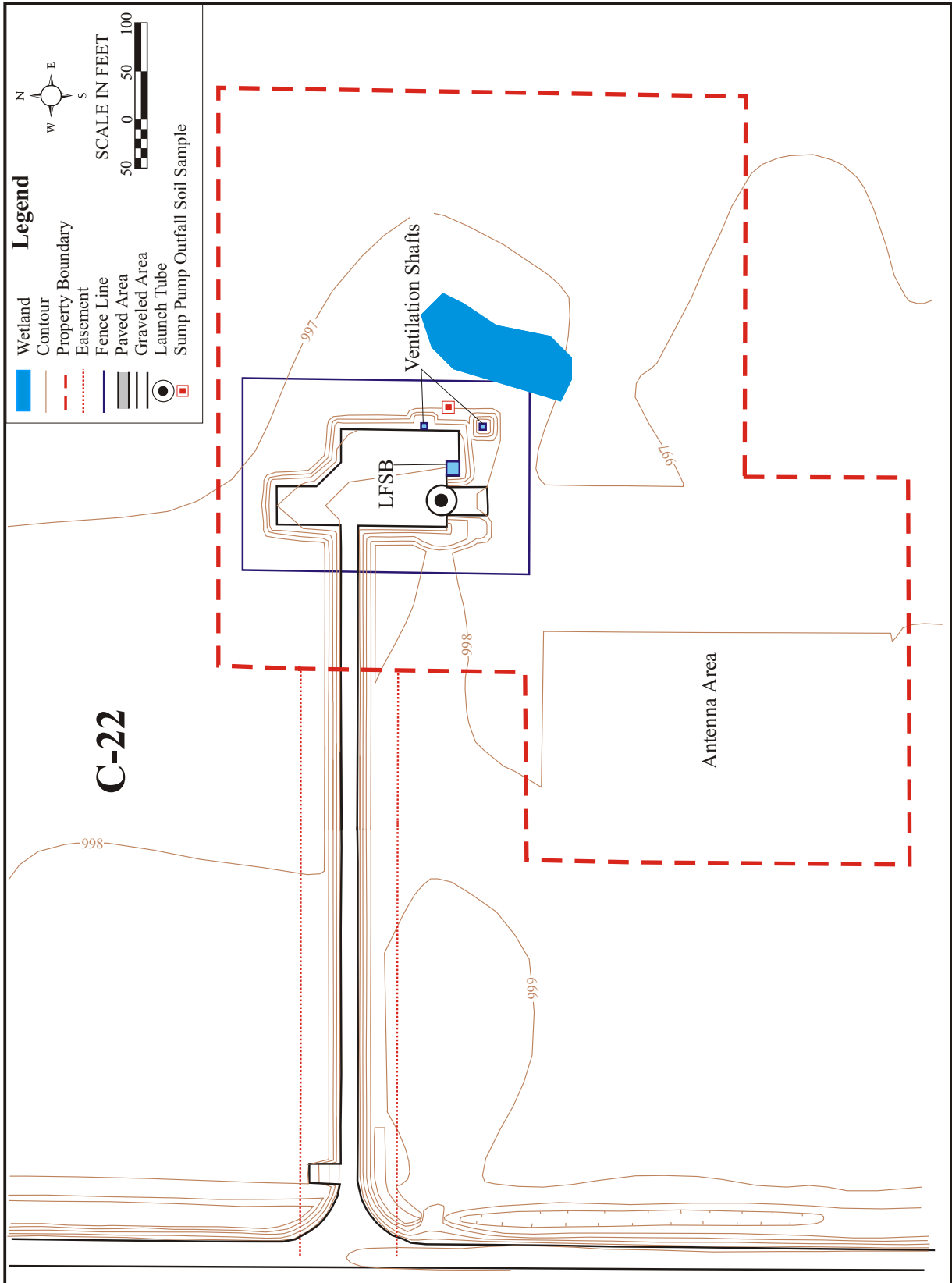


Figure C-22-2. Site Map of Former Launch Facility C-22



Figure C-22-3. View of Former Launch Facility C-22 Facing East



Figure C-22-4. View of Former Launch Facility C-22 Facing Northeast



Figure C-22-5. View of Exposed Metal, Former Launch Facility C-22



Figure C-22-6. View of Debris, Former Launch Facility C-22

TABLE OF CONTENTS

1. PURPOSE FOR THE ENVIRONMENTAL BASELINE SURVEY.....	1
2. SURVEY METHODOLOGY.....	1
3. FINDINGS FOR SUBJECT PROPERTY	1
3.1. HISTORY AND CURRENT USE.....	2
3.2. ENVIRONMENTAL SETTING.....	2
3.2.1. Site Inspection Summary	2
3.2.2. Geology	2
3.2.3. Soil	3
3.2.4. Hydrology	3
3.2.5. Wetlands.....	3
3.3. HAZARDOUS SUBSTANCES.....	3
3.4. INSTALLATION RESTORATION PROGRAM.....	3
3.5. STORAGE TANKS.....	3
3.6. OIL/WATER SEPARATORS.....	3
3.7. PESTICIDES.....	4
3.8. MEDICAL OR BIOHAZARDOUS WASTE.....	4
3.9. ORDNANCE.....	4
3.10. RADIOACTIVE WASTE.....	4
3.11. SOLID WASTE	4
3.12. GROUNDWATER	4
3.13. WASTEWATER TREATMENT, COLLECTION, AND DISCHARGE	5
3.14. DRINKING WATER QUALITY.....	5
3.15. ASBESTOS	5
3.16. POLYCHLORINATED BIPHENYLS	5
3.17. RADON	5
3.18. LEAD-BASED PAINT	5
4. FINDINGS FOR ADJACENT PROPERTIES.....	6
5. APPLICABLE REGULATORY COMPLIANCE ISSUES	6
5.1. HISTORIC PROPERTY.....	6
5.2. SENSITIVE HABITATS.....	6
5.3. THREATENED AND ENDANGERED SPECIES	6
5.4. WETLANDS.....	6
5.5. FLOODPLAINS.....	7
5.6. SEISMIC CONDITIONS.....	7
5.7. MINERAL RESOURCES.....	7
5.8. PRIME AND UNIQUE FARMLANDS OR TIMBERLANDS	7
5.9. WATER RIGHTS	7
6. CONCLUSIONS.....	7
7. RECOMMENDATIONS	7
8. CERTIFICATIONS	8
8.1. HAZARDOUS SUBSTANCES.....	8
8.2. CERTIFICATION OF POLYCHLORINATED BIPHENYLS (PCB)	8
8.3. CERTIFICATION OF ASBESTOS-CONTAINING MATERIAL (ACM).....	9
APPENDIX A – MAPS AND PHOTOGRAPHS	A-1

This page intentionally left blank