



Uploaded to VFC Website

▶▶ ▶▶ **May 2013** ◀◀ ◀◀

This Document has been provided to you courtesy of Veterans-For-Change!

Feel free to pass to any veteran who might be able to use this information!

For thousands more files like this and hundreds of links to useful information, and hundreds of "Frequently Asked Questions, please go to:

[Veterans-For-Change](http://www.veteransforchange.org)

*Veterans-For-Change is a 501(c)(3) Non-Profit Corporation
Tax ID #27-3820181*

If Veteran's don't help Veteran's, who will?

We appreciate all donations to continue to provide information and services to Veterans and their families.

https://www.paypal.com/cgi-bin/webscr?cmd=_s-xclick&hosted_button_id=WGT2M5UTB9A78

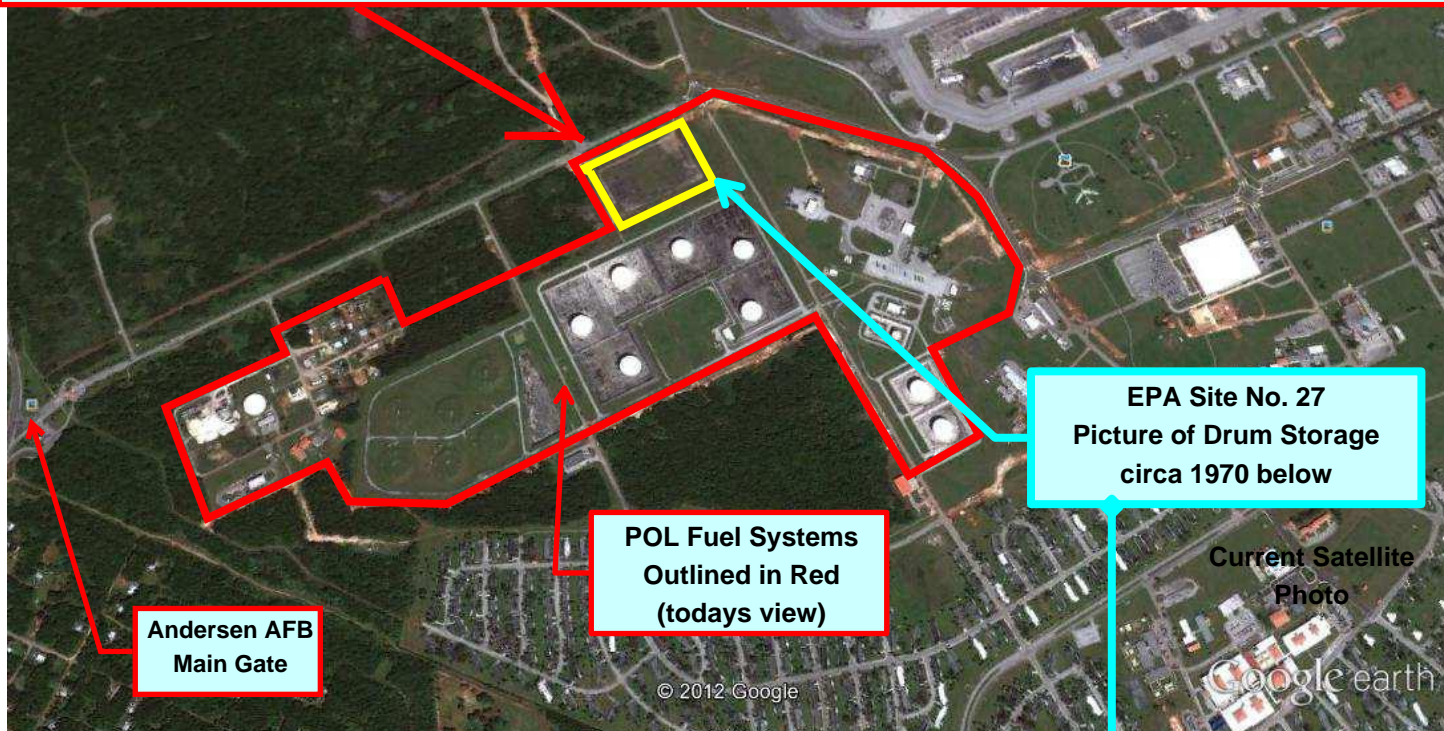
Note:

VFC is not liable for source information in this document, it is merely provided as a courtesy to our members.



This is a current satellite photo of the POL area at Andersen AFB, Guam. There has been some changes in the last forty years but many things are the same. The yellow square marks one of the drum storage lots used by the POL squadron.

It happens to be in the same place it was in the seventies. This is where herbicides were kept along with other materials. This is also where Sgt. Foster mixed and prepared the herbicides before he went out to spray. From the late 1970's to 1983 this area was used for hazardous waste. It was renamed HW-1. This is EPA Super-fund Site Number 27.



EPA Site No. 27
Picture of Drum Storage
circa 1970 below

POL Fuel Systems
Outlined in Red
(today's view)

Andersen AFB
Main Gate

Site No. 27
Hazardous
Waste
Storage
Area No.1
(HW-1)

(OU: Main
Base)

Beginning in 1950 and continuing through the 1970s, POL and solvents were stored at HW-1. From the late 1970s to 1983, HW-1 was used to store hazardous wastes.

Drums of Herbicides
were also
stored Here.

Groundwater: Groundwater data from downgradient wells have reported only trace amounts of VOCs (TCE).
Soil: Trace amounts of VOCs and SVOCs were detected. Metals concentrations in surface soil were below background concentrations. Metal concentrations at HW-1 in the shallow subsurface soil included arsenic (up to 201 ppm), chromium (up to 1,300 ppm), lead up to (8,600 ppm) at levels above CVs.

Current Status:
HW-1 is a NFRAP site. Site investigations indicate that no contaminants above residential soil standards exist in surface soil; therefore, no further response actions were recommended.

Groundwater: No public health hazard is associated with this site.
Soil: Access to HW-1 is restricted and contamination was limited to the inaccessible subsurface soil; therefore, past, current, and future exposures to the general public are not expected.

Excerpt from EPA FACILITY ID: GU6571999519

Here is a photo from circa 1970 inside the drum storage lot showing the fuel storage tanks in the back ground. This later became EPA Super-fund Site # 27. The site is outline in yellow, above.



There are Pump Houses, Under Ground Fuel Tanks, Refueling Hydrants, Hydrant Control Pits, and Fuel Conditioning Equipment in the Flight Line and Air Plane Parking Area. Herbicides were sprayed around all of these location including the security fencing around these sites. I personally witnessed Sgt. Foster spraying herbicides at all of these POL locations, including the off base locations.

As you can see the cross island pipeline and Potts Junction tank farm where Sgt Foster spayed heavy and often, aren't far from the water wells for civilian and military use. Maybe two miles.

PHILIPPINE SEA

Naval Fuel Supply Depot

APRA HARBOR

FENA RESERVOIR

MT. LAMLAM
ELEV. 1,332
FEET

Guam POL & Fuel Systems Layout circa 1968 to 1978

Booster Pumping Station

Cross Island Fuel Pipeline

Tumon Tank farm

Potts Junction Tank Farm

Urunao EPA Dump Sites

ANDERSEN AIR FORCE BASE

Filtration Station

NORTHWEST FIELD

MAIN BASE

Two of the Main Water Supply Wells Used by Civilian and Military

Main POL Tank Farm Site Andy I & Andy II

MARBO ANNEX

Harmon Hill Bend (Batch "Pig" Escape) & POL Storage ANNEX No 1

BARRIGADA TRANSMITTER SITE

NAS - Air Force Booster Pump Station

ADELUP FAULT

Sgt Foster sprayed from here all the way to Andersen AFB and at all the Air Force tank farms and the POL area and the flight line and a lot of the security fencing. Along the pipeline he sprayed a wide enough area you could drive a truck along both sides most of the way and of course under both the above ground pipe lines.

I swear that everything on these 2 pages is accurate and factual to the best of my ability.

Ralph A. Stanton

1-15-2013

Notary *Mary Jo Hilsabeck*

Ralph A. Stanton

